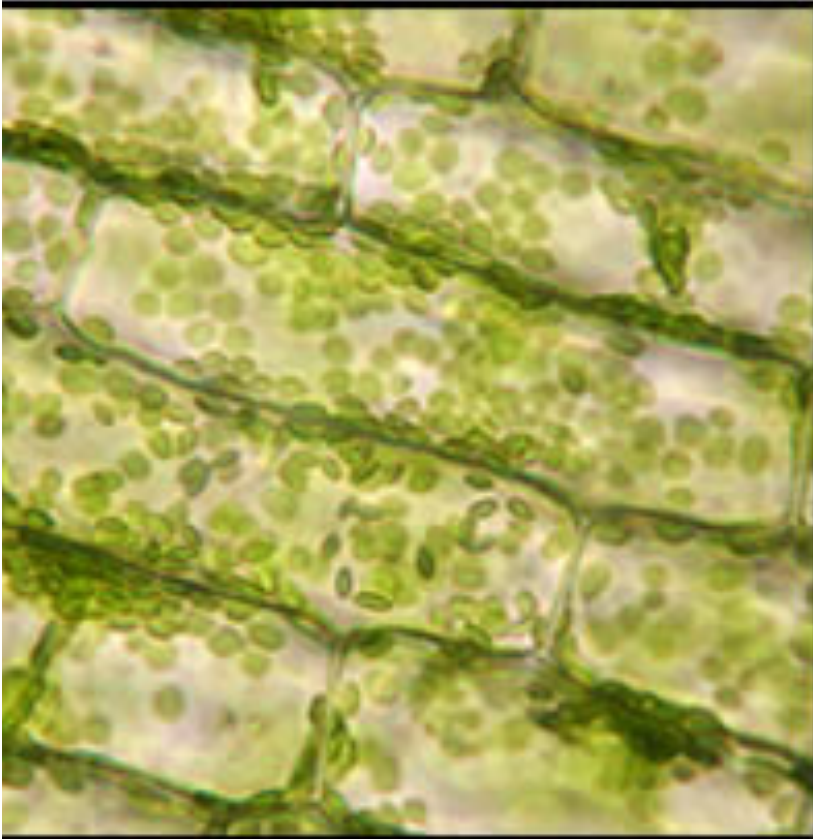
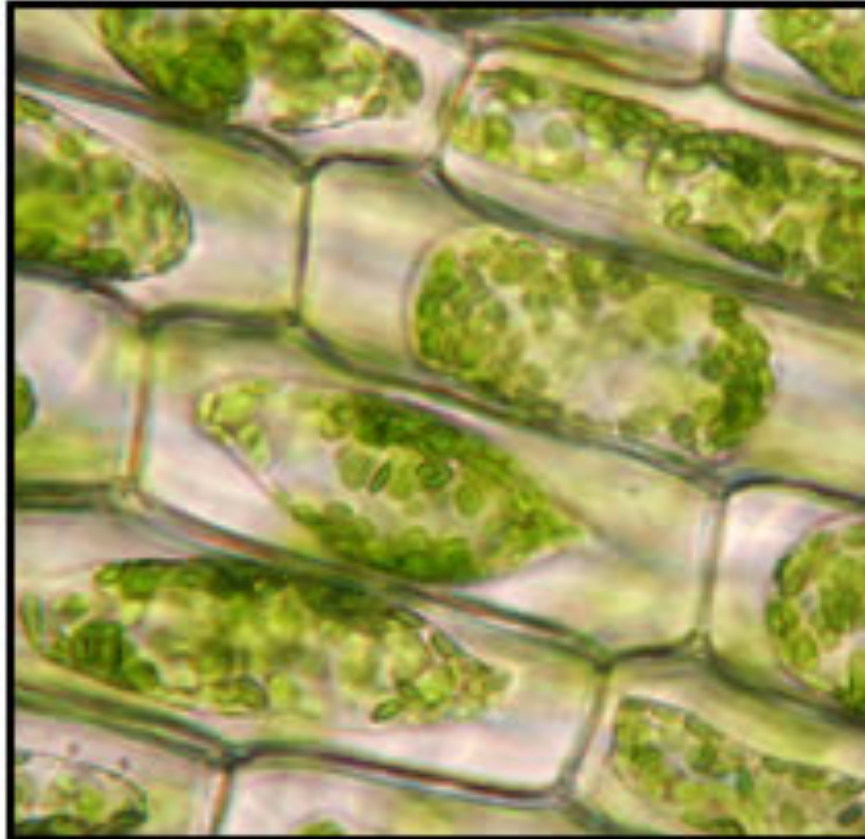


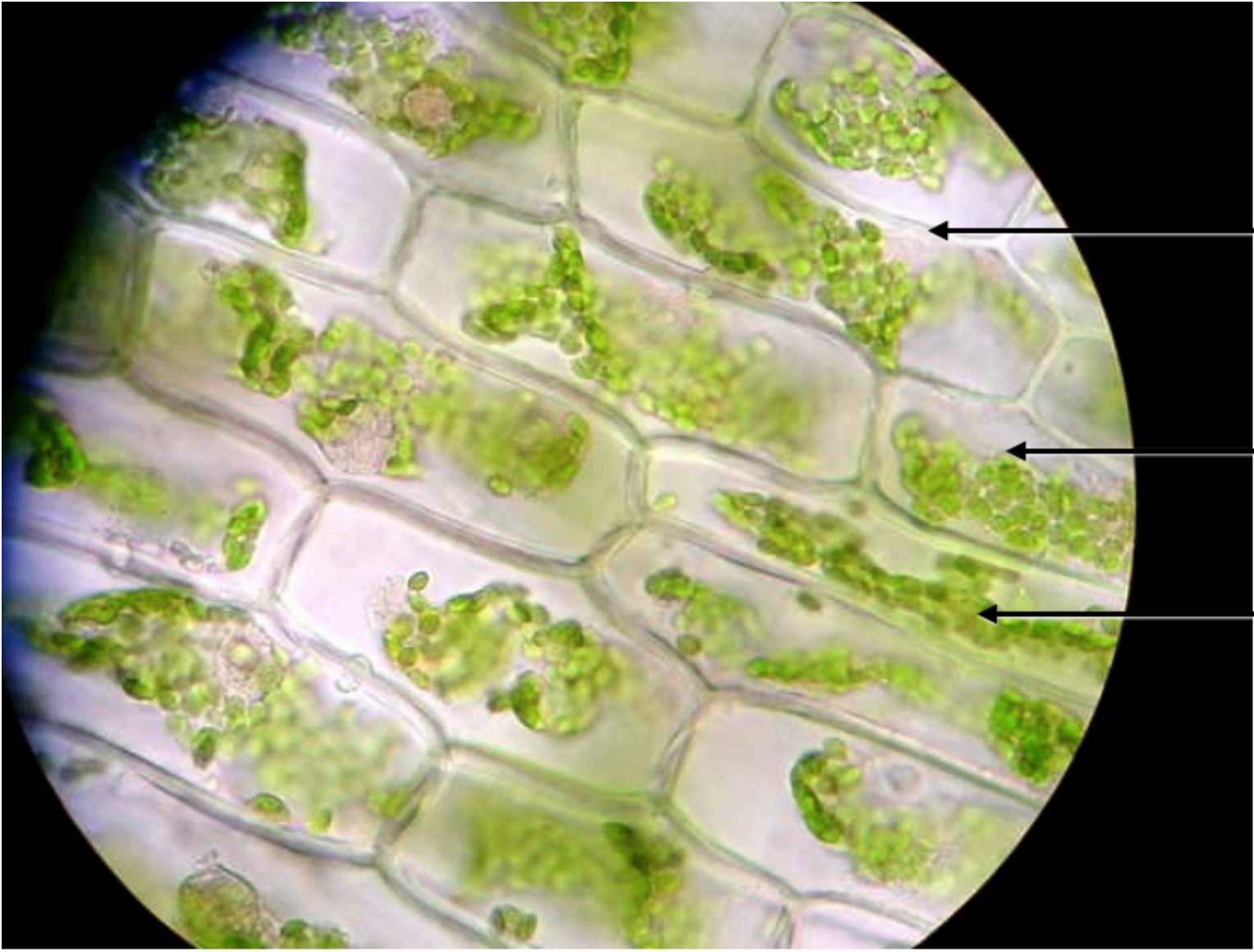
Elodea Cells in Salt Water

0 minute



5 minutes





Cell Wall

Cell Membrane

Chloroplasts

Question 1

- Observable changes include:
 - Chloroplasts are centered or bunched together in the cell.
 - The cell membrane separated from the cell wall. It is now visible.

Questions 2 and 3

- What do you think:
 - 2. Why did this happen?
 - 3. What would happen if we place these cells back into freshwater?
- No “official” answers from Mr. Ower because these are just for you to make predictions.