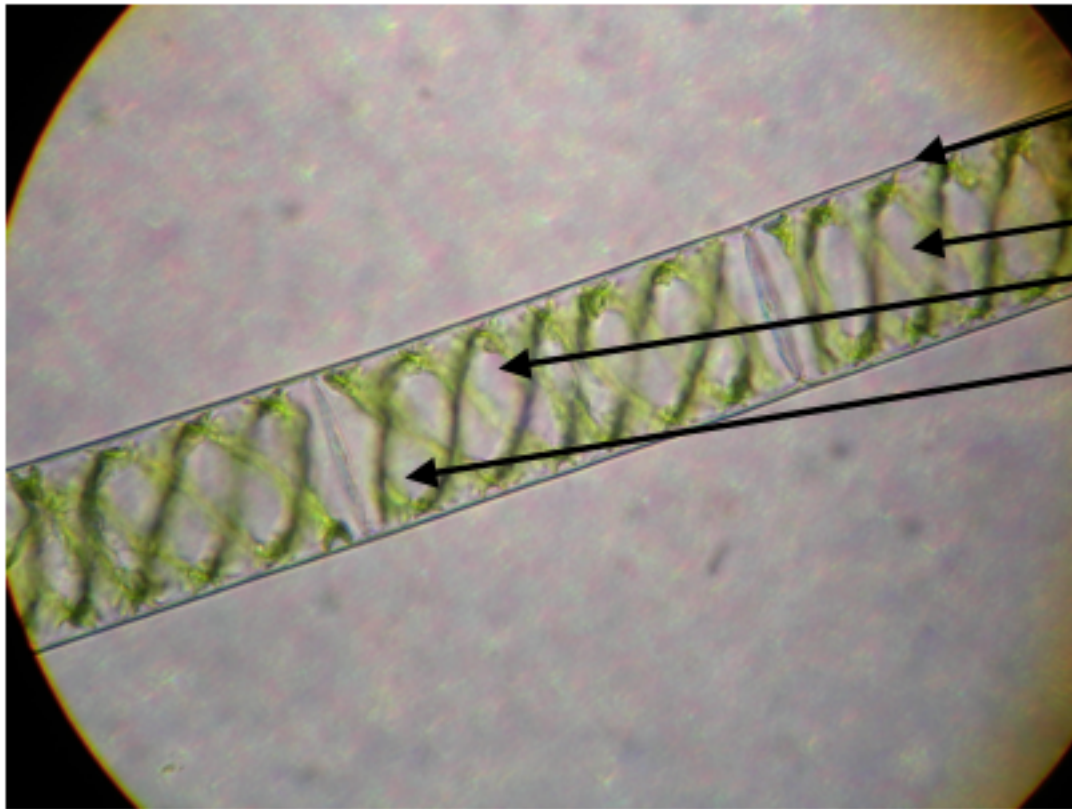


Handout 24 Answers



Cell Wall/Membrane

Chloroplast

Cytoplasm

Vacuole

Cell length: $\sim 0.1 - 0.4$ mm

Reflecting #1

- Scientists named this organism spirogyra due to the spiral arrangement of the chloroplasts in its cell.
- Spiro = spiral
- Gyra = round

Reflecting #2

- Spirogyra has the following (visible) parts in common with plant cells: cell wall, cell membrane, nucleus, vacuole, chloroplasts, and cytoplasm

Reflecting #3

- Spirogyra has the following (visible) parts in common with animal cells: cell membrane, nucleus, and cytoplasm

Reflecting #4

- Spirogyra is most similar to a plant cell (than an animal cell). This primarily due to the presence of chloroplasts. Most plant cells contain chloroplasts to create their own food through photosynthesis. Chloroplasts are not found in animal cells, nor are cell walls and vacuoles which were observed in the spirogyra.